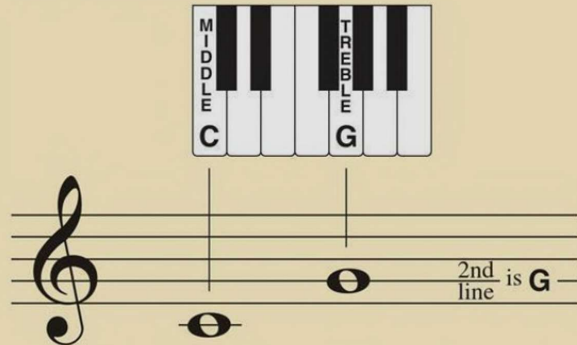




Reading Reinforcement

Treble Clef Note - G

Find the first G above Middle C.
This is called **Treble Clef G**.



The treble clef is also called the **G clef** because it circles around the **G line** on the staff. The treble clef came from the old letter G shown below.



Hand Shape Warm-up

- With R.H. fingers 1 and 5, play back and forth between Middle C and Treble Clef G. (This is the interval of a 5th.)

- A monk singing this piece would take a breath at the end of each slur.
- As you play this piece, let the music “breathe” by lifting your wrist at the end of each slur.

Chant of the Monk

Rather slowly, floating



This piece uses notes of the **C pentascale** moving by *2nds*. (See p. 22)
Transpose to the **G pentascale**. (See pp. 25 or 176)

Teacher Duet: (Student plays as written for page 42; 1 octave higher for page 43)